



VividRip

Quick Reference Guide

*All rights belong to their respective owners

Contents

Activation	5
Activating via Internet.....	5
Activating without an Internet connection	5
Deactivation	6
Printing Configurations	7
CMYW	7
CMYK	7
DTG.....	7
DTF.....	7
Working with files	8
Import Image	8
Load.....	8
Archive.....	8
Select Printer	9
View	10
Zoom	10
Pan	10
Grid	10
Ruler.....	10
Editing tools	11
Select Tool	11
Editing objects	12
Cut.....	12
Copy	12
Paste.....	12
Delete.....	12
Select All.....	12
Rotate Left	12
Rotate Right	12
Flip Vertical	12

Flip Horizontal.....	13
Align.....	13
Center Align.....	13
Fit	13
Group	13
Un Group	13
Printing Queues	14
Printer jobs	15
Spool	15
Print.....	15
Remove	15
Release.....	15
Pause.....	15
Print All.....	15
Pause All	15
Tools.....	16
Color Adjust.....	16
Ink Removal	17
Copies	17
Crop	18
Transparency	18
Knock Out Black.....	18
Knock Out Color.....	18
Distress	20
Color Replacement.....	20
Property Tabs	21
Queue.....	21
Page.....	21
Job.....	21
Browse.....	22
General Options	22
Environment tab	22

Activation

A screenshot of a software dialog box titled "Activation Dialog". It contains several input fields: "Name:" with "Your Name", "Company:" with "Your Company Name", "Phone:" with "Your Phone Number", and "E-Mail:" with "Your Email". A note "(*) required" is positioned to the right of the E-Mail field. Below these is a "Product:" dropdown menu with "Please select" and a downward arrow. At the bottom are three buttons: "Deactivate", "Activate", and "Done".

Name:	Your Name
Company:	Your Company Name
Phone:	Your Phone Number
E-Mail:	Your Email
(*) required	
Product:	Please select
Deactivate Activate Done	

Activating via Internet

Fill in the required activation information in the appropriate fields.

Type your individual activation serial number (that came with your copy of the Software) into the Serial Number field and then click the Activate button on the dialog.

Activating without an Internet connection

If you have installed the software on a computer that does not have an Internet connection, you will need a site key (in addition to the activation serial number) to complete the activation.

Fill in the required activation information in the appropriate fields.

Type your individual activation serial number (that came with your copy of the Software) into the Serial Number field.

Click the Activate button on the dialog. You see a warning about your internet connection.

The Activation wizard dialog now has a new field for the site key. Contact technical support to get your Activation Code and click the Activate button.

Deactivation

In the event you need to move your software to a new PC, you must first deactivate from the current PC. To do this you click the Deactivate button at the bottom.

After the software has been deactivated you can install on your new computer with your original serial number.

In the event that your old computer will not start or is destroyed, lost or stolen, Contact us to arrange activation on the new computer.

Printing Configurations

CMYW



This configuration is for printing white instead of black, for reverse printing. It is typically used for transfer printing.

The white cartridge is placed in the first slot of the printer and the cyan cartridge is placed in the last slot of the printer.

This configuration is for textile printing, where white is applied on top of all the other colors.

CMYK



This configuration is for standard printing. It assumes that the media is white.

DTG

Direct to garment.

This configuration is for standard printing.

DTF

Direct to film.

This configuration is for reverse printing. It is typically used for transfer printing, where white is applied on top of all the other colors.

Working with files

Import Image

Choose an image file to bring into the workspace.

Formats supported: **PNG**, TIFF (**TIF**), JPEG (**JPG**), Windows Bitmaps (**BMP**), Adobe Illustrator (**AI**), Scalable Vector Graphics (**SVG**), Portable Document Format (**PDF**).

To import vector files like AI, SVG or PNG you will need to install Inkscape first.

Load



Click on this icon to open an RDI file that has been archived to disk.

Formats supported: Ricoma Rip (**RDI**)

Archive



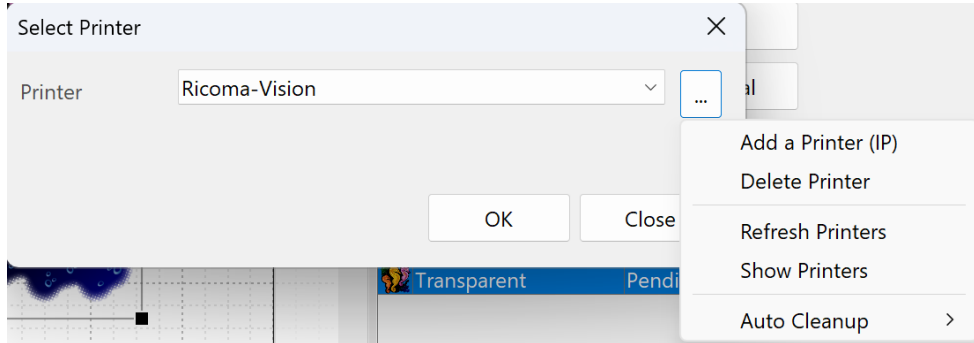
Archive the current workspace to disk.

Formats supported: Ricoma Rip (**RDI**)

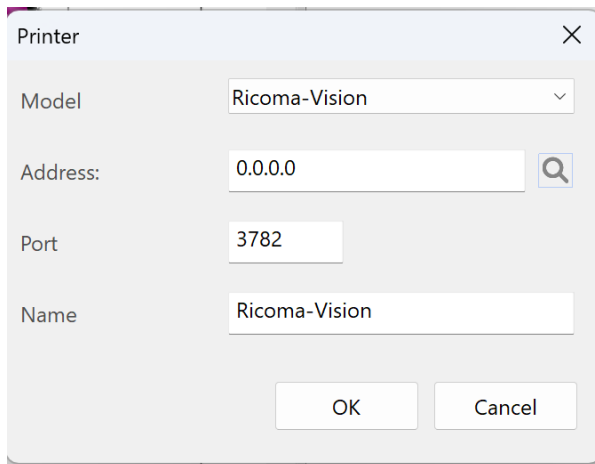
Select Printer

Use this function to setup your printer.

To add a new printer, click on "..." button and select Add.



Then you will be prompted to put the IP address, the Port, and the name of the printer.



If your printer is connected to the local network, you can click on 'search' button to auto detect the address.

View

Zoom



The “Zoom Tool” enlarges or reduces the view of the active window.

The left click enlarges the view by 2 times each time it is used. The right click reduces the view by 2 times each time it is used.

By clicking on and holding down the left mouse button, then dragging your mouse in any direction, it will fit to screen the selected area.

You can also use the mouse wheel to zoom in or zoom out. Holding down the control and using the wheel zooms in or out at the cursor position.

Pan



When pan is activated you can move around in your workspace by left clicking and dragging on the screen without using the scroll keys. Pan can be activated at any time by holding the Space bar.

Grid



Turns Grid on or off. You can right click on Rulers to change the grid properties. You can also select Tools menu, General Options and then Grid tab to change the grid settings.

Ruler



Activates the ruler and allows you to click on the beginning and drag to the end to get a measurement of any part of your workspace.

Editing tools

Select Tool



Click and drag a box around whatever you wish to select on the screen. Left click to select a single object.

Use the beads around the box to apply transformations. Click on the cross at the center to move the selected object.

You can also press and hold the Ctrl key to add more objects into the current selection.

Press and hold the Ctrl+Shift key to remove objects from the current selection.

Press and hold the shift key while dragging the selected objects to move them horizontally or vertically.

You can also right click on a selected object to get additional options such as Copy, Paste etc.

Editing objects

Cut



This function will delete the selected item and place it on the clipboard.

Copy



This option will place a copy of the selected item on the clipboard.

Paste



This function will place whatever has been saved on the clipboard.

Delete

This function will remove the selected objects.

Select All

This function selects your entire workspace.

Rotate Left



Use this button to rotate by 90 degrees to the left.

Rotate Right



Use this button to rotate by 90 degrees to the right.

Flip Vertical



Use this button to flip vertically the selected object.

Flip Horizontal



Use this button to mirror the selected object.

Align



Use these buttons to align single or multiple selected objects. You can align objects to the left, right, top, bottom and to the horizontal or vertical center.

Center Align



Centers the selected object on page.

Fit



Fits the selected object in page.

Group





Use this function to group multiple selected objects.

Un Group



Use this function to ungroup grouped objects.



Printing Queues

CMYW (2)		CMYK				
	Name	Status	Mode	Copies	Printer	
	AutoDigi_Butterfly	Pending	Standard 2 Step	1	Luminaris-200	A4
	AutoDigi_Dinosaur	Pending	Standard 2 Step	1	Luminaris-200	A4

The queues are repositories for managing printer pages and jobs. The loaded images appear on queue lists.

Each list item is a printer page that contains single or multiple images. The layout setting in Queue properties, defines the way the images are placed within the page.

You can right click on the list items to print, spool, or remove the pages from the queue.

CMYW (2)		CMYK				
	Name	Status				
	A	ending	Stand			
	A	ending	Stand			

Print

Spool

Remove

The Reserved list shows the pages that have been successfully printed. Right click on the items to restore them or configure the auto clean up feature.

Printer jobs

Spool



It prepares the page for printing, without sending to printer.

Print



It spools and sends to printer in one step.

Remove



It removes the current page from queue.

Release



If the current page is spooled, you can use this button to send the job directly to printer.

Pause



Pause the printing of the current job.

Print All



Print all spooled jobs from the current queue.

Pause All



Pause all jobs that have been sent to printer.

Tools

Color Adjust

This is a control panel for inputting all major color settings. If you click on the 'Color Adjust' button from the Queue tab, the settings will be stored and applied to new imported images. If you click on the button from the Job tab, the settings will affect the selected image only. These settings do not permanently affect the images. You can change them as many times as you wish without compromising the image quality.

Select the Color Layer to show in preview the overall changes. The White Layer option shows in preview the changes of the under base layer.

Use the Cyan, Magenta, Yellow and Black slider to adjust the CMYK color channels. You can also reduce the total ink by changing the Max Ink slider and adjust the brightness and contrast of the image.

The coverage and the choke affect the White layer. These settings let you increase or decrease the white ink.

The Rendering Intent describes the four modes by which the color management systems adapt some or all colors in a picture to the limitations of the printer. Turn on 'Show ICC color management' to preview these color transformations.

Click on 'ICC Profile' to select your own color management profile.

In Ink removal section you can enable or alter holes on image. You can also apply holes to partial transparent areas only.

Ink Removal



This feature lets you enable holes on image. You can select the shape size, the frequency and the angle to adjust the holes. The shape type can be normal or inverted or even stripe instead of hole.

You can also apply holes to partial transparent areas only.

Copies



Use the 'Copies' button to repeat a single image by defining rows and columns or by setting the fill area. Select the pattern style to change the copies layout and input the spacing to set a gap between repeats.

You can also adjust the number of copies using the resizing handles of the select tool.

Crop



With this function you can crop the selected image. Use the beads around the box to define the cropping area. Change the number of Tiles to split the cropping area to multiple images.

This feature will permanently affect the selected image.

Transparency

The alpha channel is used to indicate the transparent portions of the image, to allow the underlying garment material to show through.

With this function you can change the transparency / opacity of the selected image. Use the first group of sliders to adjust the partial transparent image areas only. The second group of sliders lets adjust the overall transparency even on areas with full opacity.

This feature will permanently affect the selected image.

Knock Out Black

This feature removes or reduces the black color from the selected image. If the garment is black or near-black you can use this function to optimize the ink usage.

The tolerance sliders adjust the sensitivity of the black color removal. Midtones, Transparency, Opacity and Hard Clip sliders provide different methods for replacing black with transparency.

The preview radio buttons let you evaluate the output after removing the black color. Click on color box next to Shirt to simulate the result on the actual garment.

This feature will permanently affect the selected image.

Knock Out Color

This feature removes or reduces a color from the selected image. It is typically used for removing colors similar to garment color, for optimizing the ink usage.

Use the eye-dropper to select the color you wish to remove. Use the plus and minus eye-dropper buttons to refine the selection by adding or removing similar colors.

The tolerance sliders adjust the sensitivity of the color removal. Midtones, Transparency, Opacity and Hard Clip sliders provide different methods for replacing the color with transparency.

The preview radio buttons let you evaluate the output after removing the color. Click on color box next to Shirt to simulate the result on the actual garment.

This feature will permanently affect the selected image.

Distress



With this feature you can apply distress to the selected image.

Select a texture from the library and use the various sliders to adjust the effect. You can also change the tint or the saturation of the image to simulate vintage or other similar effects.

Use the 'Preset' button to import your own textures to library. The textures should be seamless images in JPG format.

This feature will permanently affect the selected image.

Color Replacement

With this feature you can change the colors of the selected image.

Use the eye-dropper to select the color you wish to replace. Use the plus and minus eye-dropper buttons to refine the selection by adding or removing similar colors.

The hue, lightness, and saturation sliders let you change the selected color. You can also click on the color box to select a specific color by inputting the HLS or RGB values.

This feature will permanently affect the selected image.

Property Tabs

Queue

From this tab you can change the default settings for the current queue. New pages will use these settings.

This tab lets you adjust the colors, set the page size, the print mode, and the paper type.

Also, you can select the page layout, to set the way the imported images are placed on the page. The Auto Page option creates a new page for each imported image. The Manual layout puts the imported images on the current page stacked.

The Auto Nest layout optimizes the position of the imported images, to minimize the paper and ink usage.

You can adjust the layout settings from the '...' button. The dialog that shows up, let you define the default spacing between images. If the Optimize Orientation is turned on, the imported images can be rotated to minimize the overall paper usage.

Finally, from this tab you can set the printing margins.

Page

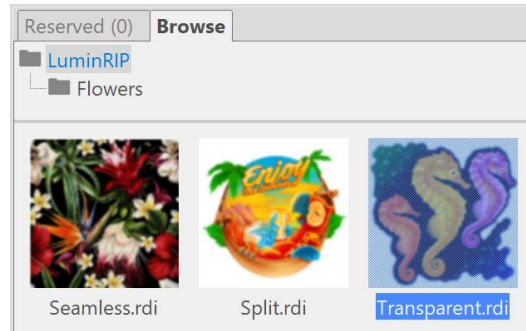
It lets you select the settings for the current page only. From this tab you can adjust the same settings that exist in the Queue tab plus the number of copies.

Also, you can use the 'Nest Page' button to auto nest all images on the current page. The 'Nest All' button will re-arrange and re-position all images from the current queue.

Job

From this tab you can change the settings of the selected image. You can create repeats, adjust the color and the Ink removal. Also, you can click on 'Reset' button to reset the color and size transformations.

Browse



Use this feature to manage your archived RDI files. You can right click on a folder to create a new folder, rename or add RDI files. Click and drag an icon to merge it into the current workspace or double click on an icon to directly open it.

General Options



Environment tab

Use this tab to select the default units, color theme and language.

Grid Tab

Choose the size of grid, turn snap on or off, show as lines or dots.