

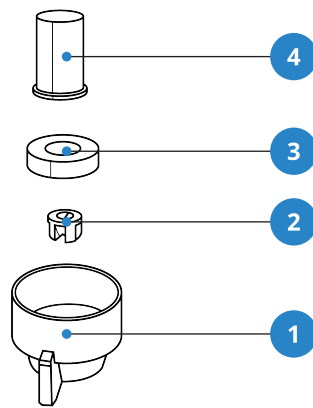


Maintenance Instructions

Upon completing your SonicJet operations for the day, ensure optimal performance and longevity with the following technical maintenance steps:

Nozzle Cleaning:

- Remove the nozzle from the SonicJet.
- Soak the nozzle in warm water overnight or until the next use.



Drain Hose Rinsing & Management:

- On the touchscreen menu, click the “maintenance” icon.
- Detach the drain hose from the pretreatment container.
- Position an empty bucket beneath the nozzle to capture excess pretreatment solution.
- Initiate the rinsing process by pressing “begin” on the touchscreen.
- Allow the solution in both the “dark” and “light” hose lines to drain completely.
- Pour surplus pretreatment solution back into the container.
- Place the drain hose into the distilled water container.
- Open the front window of the machine.
- Position a cup under the nozzle to collect distilled water.
- Press “begin” on the touchscreen to remove any remaining pretreatment solution in the hose lines.
- Repeat this process until all pretreatment solution is thoroughly flushed from the hoses.

Extended Idle Period Precaution:

- If the SonicJet will be inactive for an extended duration, it is advisable to retain some distilled water in the liquid line.
- This precautionary measure aids in facilitating a smooth start when the machine is next utilized.